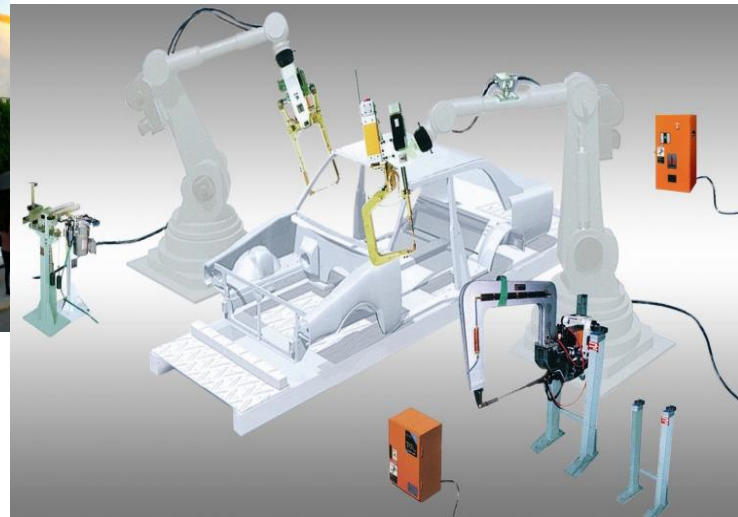


JL OBARA

Supplier of the Best Welding Equipment,
Consumables & Services



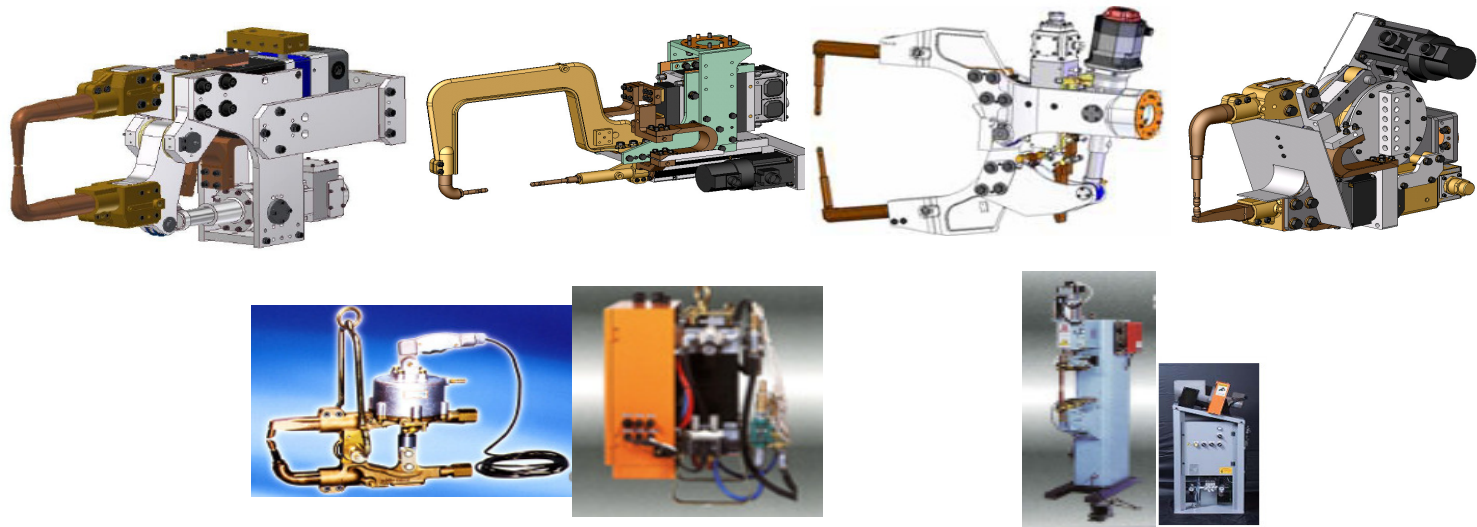
OBARA's Products:



Local Manufacturing:



Importation Products & Spare parts:



OBARA Mexico's Location & Main Customers **JL OBARA**



* ASSEMBLY PLANTS MARKED IN **RED**, USE OBARA EQUIPMENT

* ASSEMBLY PLANTS MARKED IN **YELLOW**, WELDING GUN IN TRYOUT

OBARA Mexico's Products Specification :



TAPER & THREADS THAT OBARA WORKS

CAPS, SHANK & HOLDERS ANGLE FOR MORSE TAPER

MORSE TAPER	TAPER 1/X
MT # 0	1 / 19.212
MT # 1	1 / 20.047
MT # 2	1 / 20.020
MT # 3	1 / 19.922
MT # 4	1 / 19.254

ANGLE FOR OTHER COMMON TAPER

TAPER 1/X
1 / 5
1 / 6
1 / 7
1 / 10
1 / 11.45
1 / 15
1 / 16
1 / 20

THREAD ADAPTER & HOLDER

Whitworth Tapered Pipe Thread
BSPT Tapered Whitworth Pipe Thread (GB)
(BSPT, BSPTf, PT, KR, R, Rc)

NPT American Taper Pipe Thread (USA)
ANSI B 1.20.1

Pipe Thread for pipes and fittings. Parallel female thread and tapered male thread (Taper 1:16).
An appropriate sealing compound can be used in the thread to ensure a leak-proof joint.

American Taper Pipe Thread, with sealant compound.

Nominal Diameter	Female Thread Diameter	Male Thread Diameter	Pitch
1/8"	10.00	10.00	28
1/4"	19.00	19.00	14
3/8"	28.00	28.00	14
1/2"	37.00	37.00	14
5/8"	46.00	46.00	14
3/4"	55.00	55.00	14
7/8"	64.00	64.00	14
1"	73.00	73.00	14
1 1/8"	82.00	82.00	14
1 1/4"	91.00	91.00	14
1 3/8"	100.00	100.00	14
1 1/2"	109.00	109.00	14
1 3/4"	118.00	118.00	14
2"	127.00	127.00	14
2 1/8"	136.00	136.00	14
2 1/4"	145.00	145.00	14
2 3/8"	154.00	154.00	14
2 1/2"	163.00	163.00	14
2 3/4"	172.00	172.00	14
3"	181.00	181.00	14
3 1/8"	190.00	190.00	14
3 1/4"	199.00	199.00	14
3 3/8"	208.00	208.00	14
3 1/2"	217.00	217.00	14
3 3/4"	226.00	226.00	14
4"	235.00	235.00	14
4 1/8"	244.00	244.00	14
4 1/4"	253.00	253.00	14
4 3/8"	262.00	262.00	14
4 1/2"	271.00	271.00	14
4 3/4"	280.00	280.00	14
5"	289.00	289.00	14
5 1/8"	298.00	298.00	14
5 1/4"	307.00	307.00	14
5 3/8"	316.00	316.00	14
5 1/2"	325.00	325.00	14
5 3/4"	334.00	334.00	14
6"	343.00	343.00	14

Nominal Diameter	Major Diameter	Tapping Drill Size	Pitch
1/8" NPT	7.815	6.80	27 (8.46)
1/4" NPT	15.242	13.25	27 (8.46)
3/8" NPT	15.515	13.70	24 (8.46)
1/2" NPT	21.250	18.20	24 (8.46)
5/8" NPT	21.250	18.20	24 (8.46)
3/4" NPT	21.250	18.20	24 (8.46)
7/8" NPT	21.250	18.20	24 (8.46)
1" NPT	21.250	18.20	24 (8.46)
1 1/8" NPT	21.250	18.20	24 (8.46)
1 1/4" NPT	21.250	18.20	24 (8.46)
1 3/8" NPT	21.250	18.20	24 (8.46)
1 1/2" NPT	21.250	18.20	24 (8.46)
1 3/4" NPT	21.250	18.20	24 (8.46)
2" NPT	21.250	18.20	24 (8.46)
2 1/8" NPT	21.250	18.20	24 (8.46)
2 1/4" NPT	21.250	18.20	24 (8.46)
2 3/8" NPT	21.250	18.20	24 (8.46)
2 1/2" NPT	21.250	18.20	24 (8.46)
2 3/4" NPT	21.250	18.20	24 (8.46)
3" NPT	21.250	18.20	24 (8.46)
3 1/8" NPT	21.250	18.20	24 (8.46)
3 1/4" NPT	21.250	18.20	24 (8.46)
3 3/8" NPT	21.250	18.20	24 (8.46)
3 1/2" NPT	21.250	18.20	24 (8.46)
3 3/4" NPT	21.250	18.20	24 (8.46)
4" NPT	21.250	18.20	24 (8.46)
4 1/8" NPT	21.250	18.20	24 (8.46)
4 1/4" NPT	21.250	18.20	24 (8.46)
4 3/8" NPT	21.250	18.20	24 (8.46)
4 1/2" NPT	21.250	18.20	24 (8.46)
4 3/4" NPT	21.250	18.20	24 (8.46)
5" NPT	21.250	18.20	24 (8.46)
5 1/8" NPT	21.250	18.20	24 (8.46)
5 1/4" NPT	21.250	18.20	24 (8.46)
5 3/8" NPT	21.250	18.20	24 (8.46)
5 1/2" NPT	21.250	18.20	24 (8.46)
5 3/4" NPT	21.250	18.20	24 (8.46)
6" NPT	21.250	18.20	24 (8.46)

抵抗溶接用電極材料規格 Standard of Electrode Materials

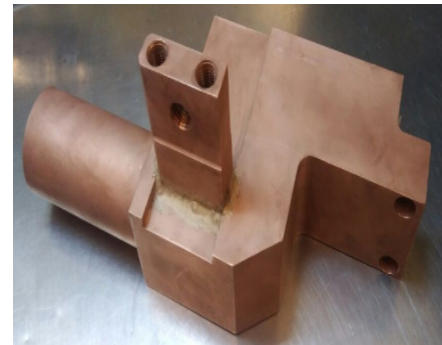
規格 RWMA	成分呼称 Alloy Name	形状・寸法 Form&Size mm	硬度 Hardness HRn	導電率 Electrical Conductivity (IACS %)	抗張力 Tensile Strength N/mm(Kgf)	伸び Elongation %	適用例 Application
Class1	ジルコニウム銅(ZrCu) OZIC	棒 Bar 16≥	70< 60<	80<	36 (350) 31 (300)	13< 20<	有機被膜付表面処理鋼板 Surface treated sheet with organic film.
Class2	クロム銅 (CuCr) クロム・ジルコニウム銅 (CrZuCu)	棒 Bar 25> 25~50	75< 70<	75<	46 (451) 42 (412)	15<	主として軟鋼、 高抗張力鋼板、 めっき鋼板等表面処理、 鋼板(めっき) Mostly for mild steel, high tensile strength steel, and surface treated steel sheet (thin coated).
		板 Plate 25> 25~50	70< 65<		42 (412) 39 (382)		
Class3	低ベリリウム銅 (BeCu50)	鍛造品 Forging 25> 25~50	72< 70<	45<	44 (431) 42 (412)	9< 5<	主としてステンレス鋼耐熱鋼用 Mostly for stainless steel, and heat-resisting steel sheet.
		鋳物 Casting 25> 25	65<		39 (382)		
Class4	高ベリリウム銅 (BeCu25)	鍛造品 Forging 25> 25	HRc40< HRc33<	20< 18<	99 (971) 63 (618)	—	主として特殊用途鋼 Mostly for special purpose steel.
		鋳物 Casting 25> 25	HRc40< HRc33<	18<	63 (618)	—	
Class20	アルミナ分散銅(CuAl ₂ O ₃) DHOM	棒 Bar 16≥	80<	75<	490 (50)	65<	主として厚めっき鋼板用 Mostly for thick coated steel.

Same we machine Bronze, Steel, Alumminum, Bakelite, Celeron, Nylamid, Electrolytic Cupper, etc. for generate divers products for welding equipment (OBARA Products orther brands).

Develop & Support New Product:

JL OBARA

Gun Arm Of Copper For
Equipment Servogun/
Integrated Trans-gun Arms/
No Obara Spec, Insulation
Parts By Different Welding
Gun Type (Local
Manufacture).



**** OBARA standarization & homologation, costumer's part number**



Why OBARA?



- **Local Support:**

- Regular visit & on-site Support.

- **Spare Parts & Consumables:**

- Select Best Source from OBARA Group.

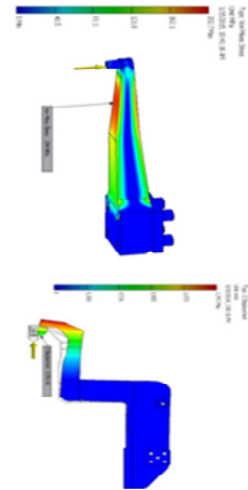
- **Product Improvement:**

- Design Locally (in US).
- 2D Design / 3D Modeling / FEA Analysis (in US)*

- **OBARA Network:**

- Utilize OBARA Worldwide network to support global customers.

- **Certification of our Quality System follow ISO rules, Norm ISO9001 (Revalidation in 2018)**



Services:



● Training:

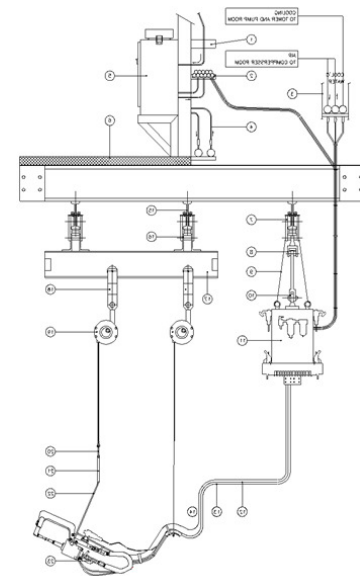
- Resistance welding (Basic & Expertise Level).
- Welding gun: portables, robotics, servo, stationary, etc.
- Transformers, Welding Controller/Trantimers (OBARA).
- Consumables Standarization

● Service:

- Modification & Installation Trantim & PSW (OBARA).
- Welding Gun Maintenance:
 - Preventive
 - Corrective

● Technical Support:

- Technical support since the beginning of the Project (since the stage of design).
- Direct support in launch stage.
- Technical support “on going on site” to the same.





OBARA's Work Schemes:



- **OBARA PO's:**

- Purchasing order, OBARA begin to manufactory.
- Consignment Contract.
- Pay & use contract.
- Blanker order or annually PO:
 - Just in time.
 - Schedule the material for time (Weekly or mounthly).
 - Delivery the material for release by user.
 - Material in stock maximum 3 mounths.

- **OBARA work with all incoterms but main are:**

- **FOB** (Free on board).
- **EXW** (Ex words).
- **DDP** (Delivery duty paid).
 - Schedule material delivery OBARA's satff.
 - Agent shipping (Fedex, DHL etc).



OBARA MEXICO S. DE R.L. DE C.V.

AGUASCALIENTES MEXICO PLANT
ROBERTO DIAZ RODRIGUEZ #212 CD. INDUSTRIAL
LOCAL PHONE: +52-449-971-15-24 (25)

<https://obara.com.mx/es/>